

# Stratégies de reperfusion des SCA ST+<12h par département et en Île-de-France 2003-2015

*Selon les recommandations ESC 2012, à partir des données du registre e-MUST*

Les stratégies de reperfusion des SCA ST+ pris en charge en primaire par les SMUR d'Île-de-France sont étudiées sur 3 sous-populations :

- ▶ Les SCA ST+ <12h sans et avec facteurs de gravité (FDG)
- ▶ Les SCA ST+ <2h sans et avec FDG
- ▶ Les SCA ST+ 2-12h sans et avec FDG

**La population d'analyse** est sélectionnée de la manière suivante : parmi tous les SCA ST+<24h inclus dans e-MUST, ont été sélectionnés ceux pris en charge par le SMUR en primaire, évoluant depuis moins de 12h et ayant une décision de désobstruction soit par thrombolyse préhospitalière (TPH), soit par angioplastie primaire (ATL Ire). Parmi ceux qui ont une décision d'ATL Ire, ont été sélectionnés ceux qui ont une ATL effectivement réalisée à l'hôpital puis ceux qui ont des horaires de passage du guide connus.

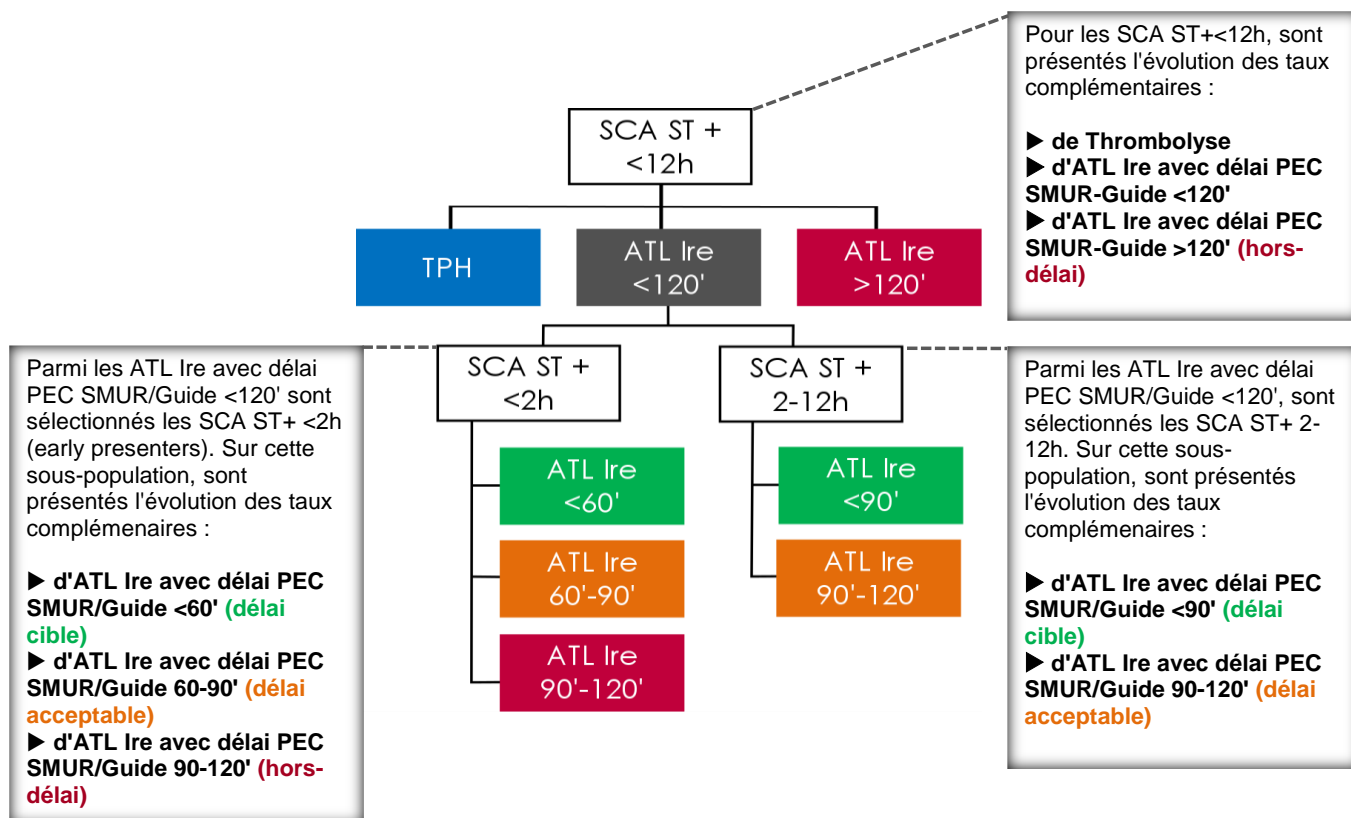
**Le délai du SCA ST+** correspond au délai entre le début de la douleur thoracique (début DT) et la prise en charge par le médecin SMUR (PEC SMUR).

**Les SCA ST+ avec FDG** sont associés soit à un Killip 2, 3 ou 4, soit à un trouble du rythme ou trouble de conduction, soit à une injection de catécholamines, soit à une intubation, soit à une réanimation cardio pulmonaire (plus ou moins associée à un CEE). Ils sont étudiés séparément car ils nécessitent de lourdes prises en charge qui allongent les délais.

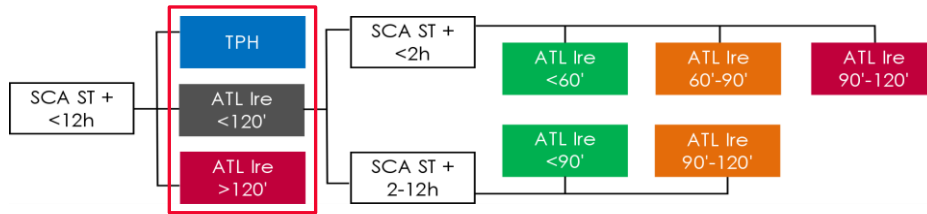
**Le délai de l'ATL Ire** correspond au délai entre la PEC SMUR et le passage du guide ; dans cette étude, l'horaire d'inflation du ballon est assimilé à l'horaire de passage du guide (horaire disponible dans e-MUST) ce qui sous-évalue un peu les délais.

Les résultats sont présentés sous forme de courbes et de tableaux permettant l'analyse par département et en Île-de-France. Attention toutefois à l'interprétation des résultats quand les effectifs sont réduits.

## Recommandations ESC 2012

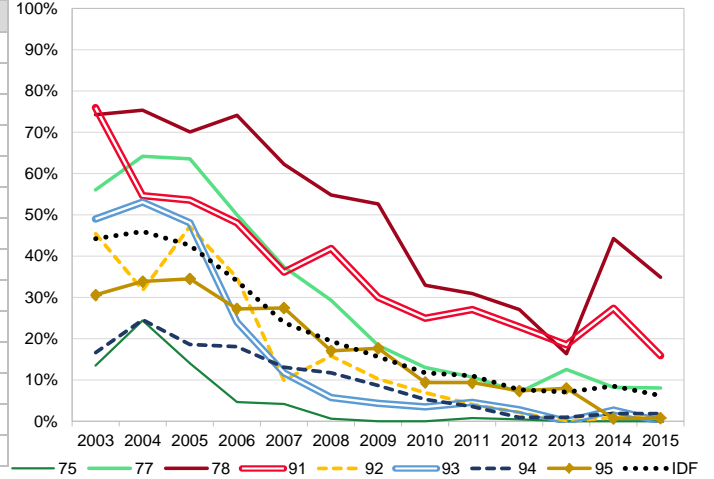


## SCA ST+<12h sans facteur de gravité



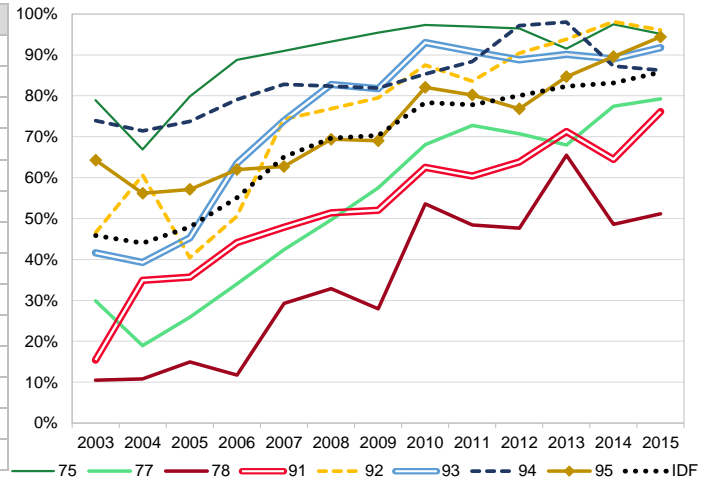
### Thrombolyse pré-hospitalière

	75	77	78	91	92	93	94	95	IDF
2003	18 (14%)	92 (56%)	78 (74%)	79 (76%)	40 (45%)	73 (49%)	23 (17%)	30 (31%)	433 (44%)
2004	34 (24%)	88 (64%)	98 (75%)	47 (55%)	21 (32%)	77 (53%)	31 (25%)	41 (34%)	437 (46%)
2005	23 (14%)	103 (64%)	75 (70%)	45 (54%)	42 (47%)	51 (48%)	22 (19%)	29 (35%)	390 (43%)
2006	5 (5%)	75 (50%)	63 (74%)	37 (48%)	31 (35%)	31 (24%)	19 (18%)	33 (27%)	294 (34%)
2007	8 (4%)	52 (37%)	66 (62%)	34 (36%)	7 (10%)	14 (12%)	16 (13%)	28 (27%)	225 (24%)
2008	1 (1%)	49 (29%)	40 (55%)	44 (42%)	13 (16%)	8 (6%)	16 (12%)	19 (17%)	190 (19%)
2009	0 (0%)	33 (18%)	49 (53%)	30 (30%)	8 (10%)	6 (4%)	11 (9%)	20 (18%)	157 (16%)
2010	0 (0%)	22 (13%)	32 (33%)	24 (25%)	5 (7%)	3 (3%)	4 (5%)	10 (9%)	100 (12%)
2011	1 (1%)	20 (11%)	30 (31%)	26 (27%)	3 (4%)	4 (5%)	4 (4%)	9 (9%)	97 (11%)
2012	1 (1%)	14 (7%)	29 (27%)	19 (23%)	2 (2%)	3 (3%)	1 (1%)	8 (7%)	77 (8%)
2013	0 (0%)	22 (13%)	18 (16%)	20 (19%)	0 (0%)	0 (0%)	1 (1%)	11 (8%)	72 (7%)
2014	0 (0%)	16 (8%)	31 (44%)	37 (27%)	1 (1%)	3 (3%)	3 (2%)	1 (1%)	92 (9%)
2015	0 (0%)	9 (8%)	30 (35%)	14 (16%)	1 (1%)	0 (0%)	2 (2%)	1 (1%)	57 (6%)
<b>total</b>	<b>91 (4%)</b>	<b>595 (28%)</b>	<b>639 (50%)</b>	<b>456 (36%)</b>	<b>174 (15%)</b>	<b>273 (18%)</b>	<b>153 (10%)</b>	<b>240 (16%)</b>	<b>2621 (21%)</b>



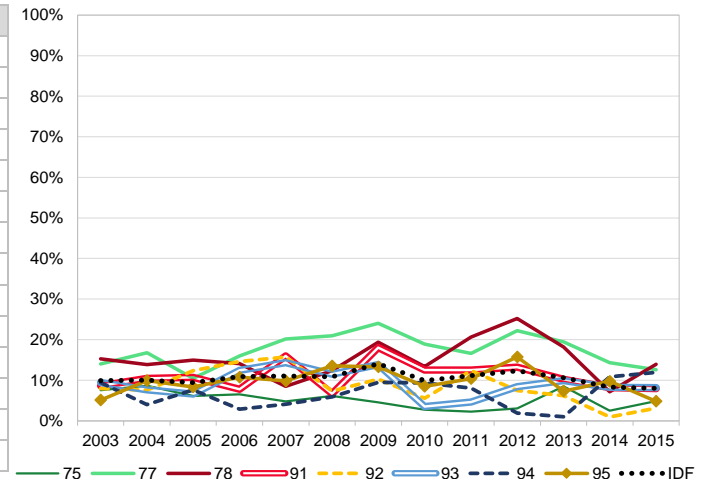
### ATL Ire <120 minutes

	75	77	78	91	92	93	94	95	IDF
2003	105 (79%)	49 (30%)	11 (10%)	16 (15%)	41 (47%)	62 (42%)	102 (74%)	63 (64%)	449 (46%)
2004	93 (67%)	26 (19%)	14 (11%)	30 (35%)	40 (61%)	57 (39%)	90 (71%)	68 (56%)	418 (44%)
2005	131 (80%)	42 (26%)	16 (15%)	30 (36%)	36 (40%)	48 (45%)	87 (74%)	48 (57%)	438 (48%)
2006	95 (89%)	51 (34%)	10 (12%)	34 (44%)	45 (51%)	82 (64%)	83 (79%)	75 (62%)	475 (55%)
2007	172 (91%)	59 (42%)	31 (29%)	45 (48%)	52 (74%)	88 (74%)	101 (83%)	64 (63%)	612 (65%)
2008	152 (93%)	83 (50%)	24 (33%)	54 (51%)	63 (77%)	115 (83%)	112 (82%)	77 (69%)	680 (70%)
2009	168 (95%)	103 (58%)	26 (28%)	52 (52%)	62 (79%)	112 (82%)	104 (82%)	78 (69%)	705 (70%)
2010	144 (97%)	115 (68%)	52 (54%)	60 (63%)	63 (88%)	80 (93%)	64 (85%)	87 (82%)	665 (78%)
2011	127 (92%)	136 (73%)	47 (48%)	58 (60%)	61 (84%)	79 (91%)	99 (88%)	77 (80%)	684 (78%)
2012	192 (96%)	140 (71%)	51 (48%)	53 (64%)	85 (90%)	95 (89%)	102 (97%)	83 (77%)	801 (80%)
2013	162 (92%)	119 (68%)	72 (65%)	77 (71%)	106 (94%)	82 (90%)	99 (98%)	116 (85%)	833 (82%)
2014	155 (97%)	151 (77%)	34 (49%)	87 (64%)	104 (98%)	97 (89%)	137 (87%)	129 (90%)	894 (83%)
2015	137 (95%)	88 (79%)	44 (51%)	67 (76%)	123 (96%)	112 (92%)	94 (86%)	118 (94%)	783 (86%)
<b>total</b>	<b>1833 (90%)</b>	<b>1162 (54%)</b>	<b>432 (34%)</b>	<b>663 (53%)</b>	<b>881 (77%)</b>	<b>1109 (73%)</b>	<b>1274 (83%)</b>	<b>1083 (74%)</b>	<b>8437 (68%)</b>

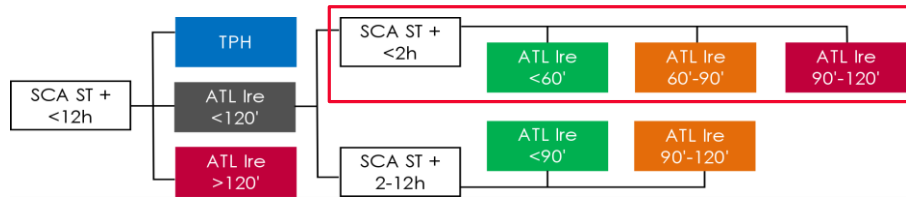


### ATL Ire >120 minutes (hors-délai)

	75	77	78	91	92	93	94	95	IDF
2003	10 (8%)	23 (14%)	16 (15%)	9 (9%)	7 (8%)	14 (9%)	13 (9%)	5 (5%)	97 (10%)
2004	12 (9%)	23 (17%)	18 (14%)	9 (10%)	5 (8%)	11 (8%)	5 (4%)	12 (10%)	95 (10%)
2005	10 (6%)	17 (10%)	16 (15%)	9 (11%)	11 (12%)	7 (7%)	9 (8%)	7 (8%)	86 (9%)
2006	7 (7%)	24 (16%)	12 (14%)	6 (8%)	13 (15%)	16 (12%)	3 (3%)	13 (11%)	94 (11%)
2007	9 (5%)	28 (20%)	9 (8%)	15 (16%)	11 (16%)	17 (14%)	5 (4%)	10 (10%)	104 (11%)
2008	10 (6%)	35 (21%)	9 (12%)	7 (7%)	6 (7%)	16 (12%)	8 (6%)	15 (14%)	106 (11%)
2009	8 (5%)	43 (24%)	18 (19%)	18 (18%)	8 (10%)	19 (14%)	12 (9%)	15 (13%)	141 (14%)
2010	4 (3%)	32 (19%)	13 (13%)	12 (13%)	4 (6%)	3 (3%)	7 (9%)	9 (8%)	84 (10%)
2011	3 (2%)	31 (17%)	20 (21%)	12 (13%)	9 (12%)	4 (5%)	9 (8%)	10 (10%)	98 (11%)
2012	6 (3%)	44 (22%)	27 (25%)	11 (13%)	7 (7%)	9 (8%)	2 (2%)	17 (16%)	123 (12%)
2013	15 (8%)	34 (19%)	20 (18%)	11 (10%)	7 (8%)	9 (10%)	1 (1%)	10 (7%)	107 (11%)
2014	4 (3%)	28 (14%)	5 (7%)	11 (8%)	1 (1%)	9 (8%)	17 (11%)	14 (10%)	89 (8%)
2015	7 (5%)	14 (13%)	12 (14%)	7 (8%)	4 (3%)	10 (8%)	13 (12%)	6 (5%)	73 (8%)
<b>total</b>	<b>105 (5%)</b>	<b>376 (18%)</b>	<b>195 (15%)</b>	<b>137 (11%)</b>	<b>93 (8%)</b>	<b>144 (9%)</b>	<b>104 (7%)</b>	<b>143 (10%)</b>	<b>1297 (10%)</b>

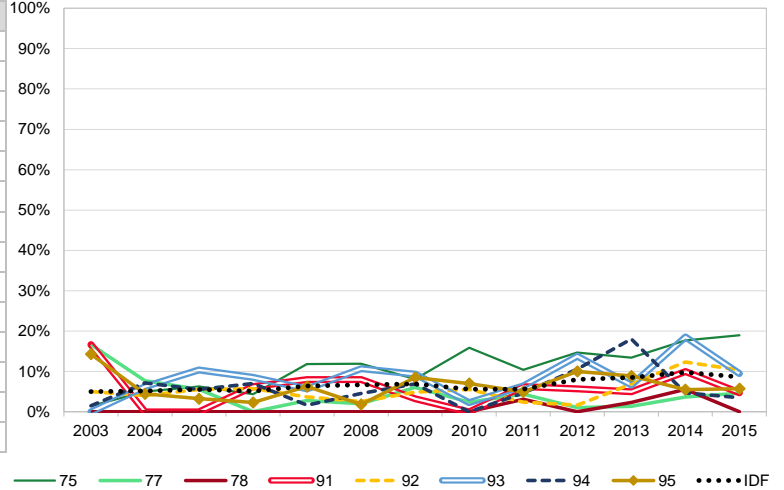


## SCA ST+<2h sans facteur de gravité



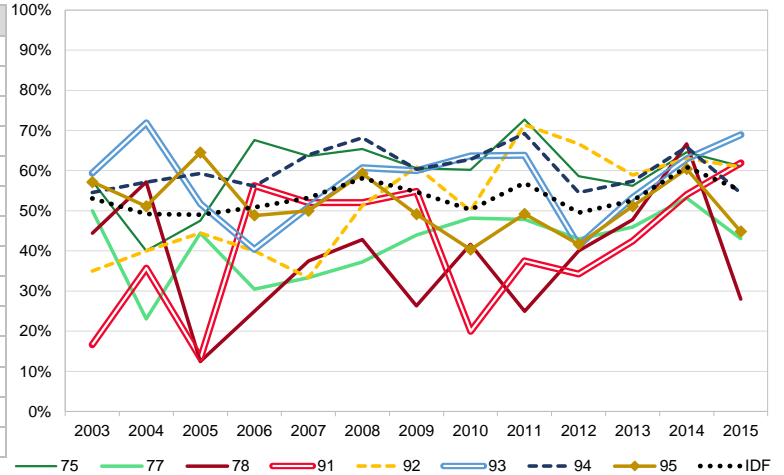
### ATL Ire <60 minutes (délai cible)

	75	77	78	91	92	93	94	95	IDF
2003	1 (1%)	4 (17%)	0 (0%)	1 (17%)	1 (5%)	0 (0%)	1 (2%)	5 (14%)	13 (5%)
2004	3 (5%)	1 (8%)	0 (0%)	0 (0%)	1 (4%)	2 (6%)	4 (7%)	2 (4%)	13 (5%)
2005	5 (6%)	1 (6%)	0 (0%)	0 (0%)	1 (6%)	3 (10%)	3 (6%)	1 (3%)	14 (6%)
2006	3 (4%)	0 (0%)	0 (0%)	1 (6%)	2 (6%)	4 (9%)	4 (7%)	1 (2%)	15 (5%)
2007	13 (12%)	1 (3%)	0 (0%)	2 (8%)	1 (4%)	3 (6%)	1 (2%)	3 (6%)	24 (6%)
2008	12 (12%)	1 (2%)	0 (0%)	2 (8%)	1 (3%)	9 (11%)	3 (5%)	1 (2%)	29 (7%)
2009	8 (8%)	4 (6%)	0 (0%)	1 (3%)	2 (5%)	7 (9%)	4 (7%)	5 (8%)	31 (7%)
2010	14 (16%)	2 (2%)	0 (0%)	0 (0%)	2 (6%)	1 (2%)	0 (0%)	4 (7%)	23 (6%)
2011	8 (10%)	4 (4%)	1 (3%)	2 (6%)	1 (2%)	3 (6%)	3 (5%)	3 (5%)	25 (6%)
2012	17 (15%)	1 (1%)	0 (0%)	2 (6%)	1 (2%)	8 (14%)	7 (11%)	6 (10%)	42 (8%)
2013	15 (13%)	1 (1%)	1 (2%)	2 (5%)	5 (7%)	4 (7%)	11 (18%)	8 (9%)	47 (8%)
2014	20 (18%)	4 (4%)	1 (6%)	5 (10%)	9 (12%)	10 (19%)	4 (5%)	5 (5%)	58 (10%)
2015	18 (19%)	3 (5%)	0 (0%)	2 (5%)	9 (10%)	7 (9%)	2 (4%)	5 (6%)	46 (9%)
<b>total</b>	<b>137 (12%)</b>	<b>27 (4%)</b>	<b>3 (1%)</b>	<b>20 (5%)</b>	<b>36 (6%)</b>	<b>61 (9%)</b>	<b>47 (6%)</b>	<b>49 (6%)</b>	<b>380 (7%)</b>



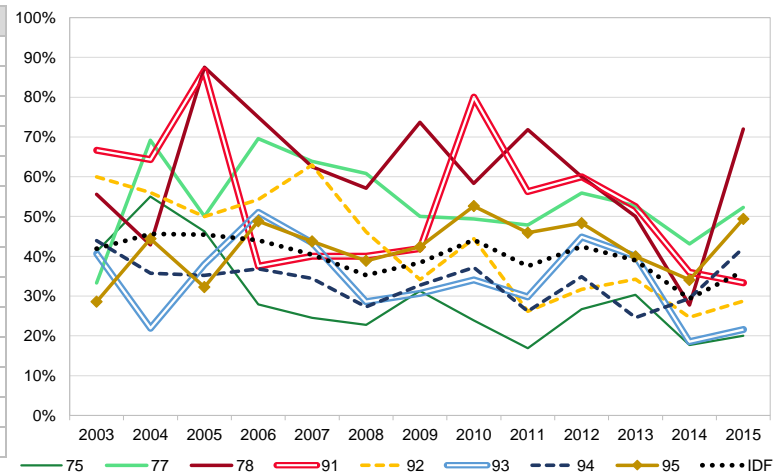
### ATL Ire 60-90 minutes (délai acceptable)

	75	77	78	91	92	93	94	95	IDF
2003	39 (57%)	12 (50%)	4 (44%)	1 (17%)	7 (35%)	19 (59%)	36 (55%)	20 (57%)	138 (53%)
2004	24 (40%)	3 (23%)	4 (57%)	5 (36%)	10 (40%)	23 (72%)	32 (57%)	23 (51%)	124 (49%)
2005	38 (48%)	8 (44%)	1 (13%)	2 (13%)	8 (44%)	15 (52%)	32 (59%)	20 (65%)	124 (49%)
2006	46 (68%)	7 (30%)	1 (25%)	9 (56%)	14 (40%)	19 (40%)	32 (56%)	21 (49%)	149 (51%)
2007	70 (64%)	12 (33%)	6 (38%)	13 (52%)	9 (33%)	27 (51%)	39 (64%)	24 (50%)	200 (53%)
2008	66 (65%)	19 (37%)	6 (43%)	13 (52%)	20 (51%)	51 (61%)	45 (68%)	32 (59%)	252 (58%)
2009	60 (61%)	29 (44%)	5 (26%)	17 (55%)	25 (61%)	45 (60%)	35 (60%)	29 (49%)	245 (55%)
2010	53 (60%)	40 (48%)	10 (42%)	7 (20%)	18 (50%)	28 (64%)	27 (63%)	23 (40%)	206 (50%)
2011	56 (73%)	44 (48%)	8 (25%)	12 (38%)	30 (71%)	30 (64%)	45 (69%)	30 (49%)	255 (57%)
2012	68 (59%)	40 (43%)	14 (40%)	12 (34%)	40 (67%)	24 (41%)	36 (55%)	25 (42%)	259 (50%)
2013	63 (56%)	34 (46%)	21 (48%)	17 (43%)	43 (59%)	32 (53%)	35 (57%)	46 (51%)	291 (53%)
2014	73 (85%)	58 (53%)	12 (67%)	27 (54%)	46 (63%)	34 (63%)	56 (66%)	55 (60%)	361 (61%)
2015	58 (61%)	28 (43%)	7 (28%)	26 (62%)	53 (61%)	51 (69%)	31 (54%)	39 (45%)	293 (55%)
<b>total</b>	<b>714 (60%)</b>	<b>334 (45%)</b>	<b>99 (39%)</b>	<b>161 (44%)</b>	<b>323 (56%)</b>	<b>398 (58%)</b>	<b>481 (61%)</b>	<b>387 (51%)</b>	<b>2897 (54%)</b>

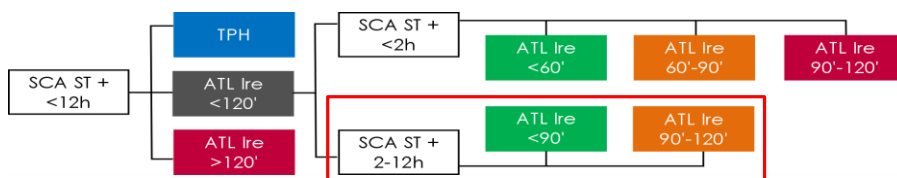


### ATL Ire 90-120 minutes (hors-délai)

	75	77	78	91	92	93	94	95	IDF
2003	28 (41%)	8 (33%)	5 (56%)	4 (67%)	12 (60%)	13 (41%)	29 (44%)	10 (29%)	109 (42%)
2004	33 (55%)	9 (69%)	3 (43%)	9 (64%)	14 (56%)	7 (22%)	20 (36%)	20 (44%)	115 (46%)
2005	37 (46%)	9 (50%)	7 (88%)	13 (87%)	9 (50%)	11 (38%)	19 (35%)	10 (32%)	115 (45%)
2006	19 (28%)	16 (70%)	3 (75%)	6 (38%)	19 (54%)	24 (51%)	21 (37%)	21 (49%)	129 (44%)
2007	27 (25%)	23 (64%)	10 (63%)	10 (40%)	17 (63%)	23 (43%)	21 (34%)	21 (44%)	152 (40%)
2008	23 (23%)	31 (61%)	8 (57%)	10 (40%)	18 (46%)	24 (29%)	18 (27%)	21 (39%)	153 (35%)
2009	31 (31%)	33 (50%)	14 (74%)	13 (42%)	14 (34%)	23 (31%)	19 (33%)	25 (42%)	172 (38%)
2010	21 (24%)	41 (49%)	14 (58%)	28 (80%)	16 (44%)	15 (34%)	16 (37%)	30 (53%)	181 (44%)
2011	13 (17%)	44 (48%)	23 (72%)	18 (56%)	11 (26%)	14 (30%)	17 (26%)	28 (46%)	168 (38%)
2012	31 (27%)	52 (56%)	21 (60%)	21 (60%)	19 (32%)	26 (45%)	23 (35%)	29 (48%)	222 (42%)
2013	34 (30%)	39 (53%)	22 (50%)	21 (53%)	25 (34%)	24 (40%)	15 (25%)	36 (40%)	216 (39%)
2014	20 (18%)	47 (43%)	5 (28%)	18 (36%)	18 (25%)	10 (19%)	25 (29%)	31 (34%)	174 (29%)
2015	19 (20%)	34 (52%)	18 (72%)	14 (33%)	25 (29%)	16 (22%)	24 (42%)	43 (49%)	193 (36%)
<b>total</b>	<b>336 (28%)</b>	<b>386 (52%)</b>	<b>153 (60%)</b>	<b>185 (51%)</b>	<b>217 (38%)</b>	<b>230 (33%)</b>	<b>267 (34%)</b>	<b>325 (43%)</b>	<b>2099 (39%)</b>

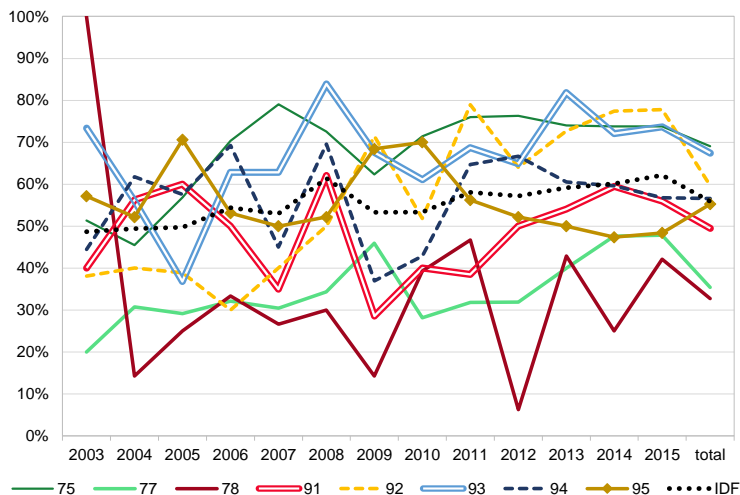


## SCA ST+ 2-12h sans facteur de gravité



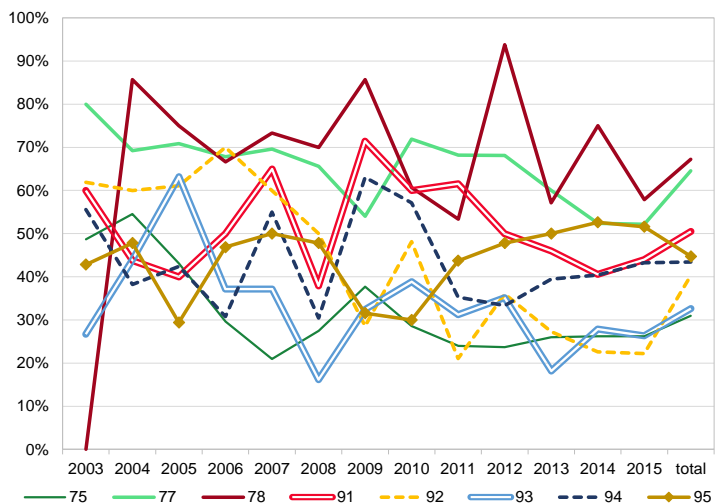
### ATL Ire <90 minutes (délai cible)

	75	77	78	91	92	93	94	95	IDF
2003	19 (51%)	5 (20%)	2 (100%)	4 (40%)	8 (38%)	22 (73%)	16 (44%)	16 (57%)	92 (49%)
2004	15 (45%)	4 (31%)	1 (14%)	9 (56%)	6 (40%)	14 (56%)	21 (62%)	12 (52%)	82 (49%)
2005	29 (57%)	7 (29%)	2 (25%)	9 (60%)	7 (39%)	7 (37%)	19 (58%)	12 (71%)	92 (50%)
2006	19 (70%)	9 (32%)	2 (33%)	9 (50%)	3 (30%)	22 (63%)	18 (69%)	17 (53%)	99 (54%)
2007	49 (79%)	7 (30%)	4 (27%)	7 (35%)	10 (40%)	22 (63%)	18 (45%)	8 (50%)	125 (53%)
2008	37 (73%)	11 (34%)	3 (30%)	18 (62%)	12 (50%)	26 (84%)	32 (70%)	12 (52%)	151 (61%)
2009	43 (62%)	17 (46%)	1 (14%)	6 (29%)	15 (71%)	25 (68%)	17 (37%)	13 (68%)	137 (53%)
2010	40 (71%)	9 (28%)	11 (39%)	10 (40%)	14 (52%)	22 (61%)	9 (43%)	21 (70%)	136 (53%)
2011	38 (76%)	14 (32%)	7 (47%)	10 (38%)	15 (79%)	22 (69%)	22 (65%)	9 (56%)	137 (58%)
2012	58 (76%)	15 (32%)	1 (6%)	9 (50%)	16 (64%)	24 (65%)	24 (67%)	12 (52%)	159 (57%)
2013	37 (74%)	18 (40%)	12 (43%)	20 (54%)	24 (73%)	18 (82%)	23 (61%)	13 (50%)	165 (59%)
2014	31 (74%)	20 (48%)	4 (25%)	22 (59%)	24 (77%)	31 (72%)	31 (60%)	18 (47%)	181 (60%)
2015	31 (74%)	11 (48%)	8 (42%)	14 (56%)	28 (78%)	28 (74%)	21 (57%)	15 (48%)	156 (62%)
<b>total</b>	<b>446 (69%)</b>	<b>147 (35%)</b>	<b>58 (33%)</b>	<b>147 (49%)</b>	<b>182 (60%)</b>	<b>283 (67%)</b>	<b>271 (57%)</b>	<b>178 (55%)</b>	<b>1712 (56%)</b>

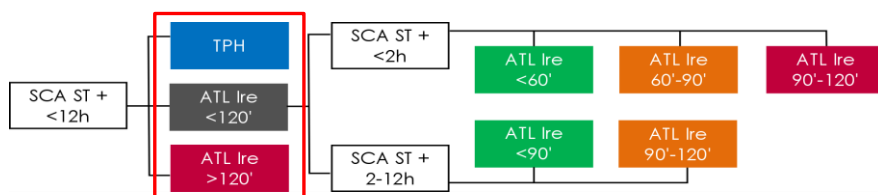


### ATL Ire >90 minutes (délai acceptable)

	75	77	78	91	92	93	94	95	IDF
2003	18 (49%)	20 (80%)	0 (0%)	6 (60%)	13 (62%)	8 (27%)	20 (56%)	12 (43%)	97 (51%)
2004	18 (55%)	9 (69%)	6 (86%)	7 (44%)	9 (60%)	11 (44%)	13 (38%)	11 (48%)	84 (51%)
2005	22 (43%)	17 (71%)	6 (75%)	6 (40%)	11 (61%)	12 (63%)	14 (42%)	5 (29%)	93 (50%)
2006	8 (30%)	19 (68%)	4 (67%)	9 (50%)	7 (70%)	13 (37%)	8 (31%)	15 (47%)	83 (46%)
2007	13 (21%)	16 (70%)	11 (73%)	13 (65%)	15 (60%)	13 (37%)	22 (55%)	8 (50%)	111 (47%)
2008	14 (27%)	21 (66%)	7 (70%)	11 (38%)	12 (50%)	5 (16%)	14 (30%)	11 (48%)	95 (39%)
2009	26 (38%)	20 (54%)	6 (86%)	15 (71%)	6 (29%)	12 (32%)	29 (63%)	6 (32%)	120 (47%)
2010	16 (29%)	23 (72%)	17 (61%)	15 (60%)	13 (48%)	14 (39%)	12 (57%)	9 (30%)	119 (47%)
2011	12 (24%)	30 (68%)	8 (53%)	16 (62%)	4 (21%)	10 (31%)	12 (35%)	7 (44%)	99 (42%)
2012	18 (24%)	32 (68%)	15 (94%)	9 (50%)	9 (36%)	13 (35%)	12 (33%)	11 (48%)	119 (43%)
2013	13 (26%)	27 (60%)	16 (57%)	17 (46%)	9 (27%)	4 (18%)	15 (39%)	13 (50%)	114 (41%)
2014	11 (26%)	22 (52%)	12 (75%)	15 (41%)	7 (23%)	12 (28%)	21 (40%)	20 (53%)	120 (40%)
2015	11 (26%)	12 (52%)	11 (58%)	11 (44%)	8 (22%)	10 (26%)	16 (43%)	16 (52%)	95 (38%)
<b>total</b>	<b>200 (31%)</b>	<b>268 (65%)</b>	<b>119 (67%)</b>	<b>150 (51%)</b>	<b>123 (40%)</b>	<b>137 (33%)</b>	<b>208 (43%)</b>	<b>144 (45%)</b>	<b>1349 (44%)</b>

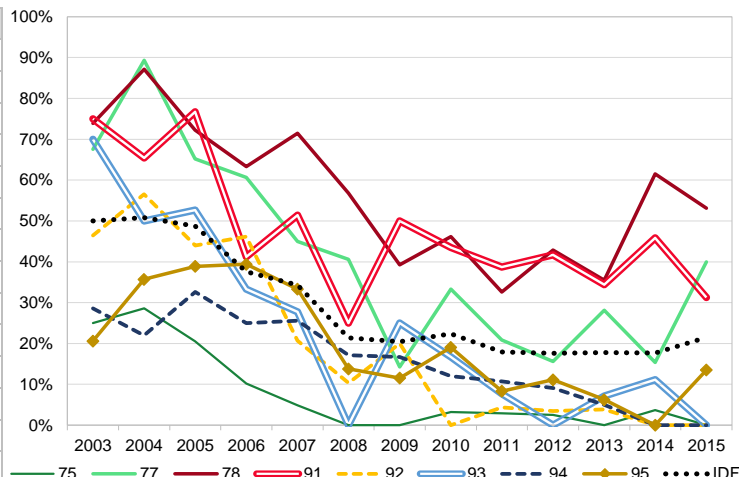


## SCA ST+<12h avec facteur de gravité



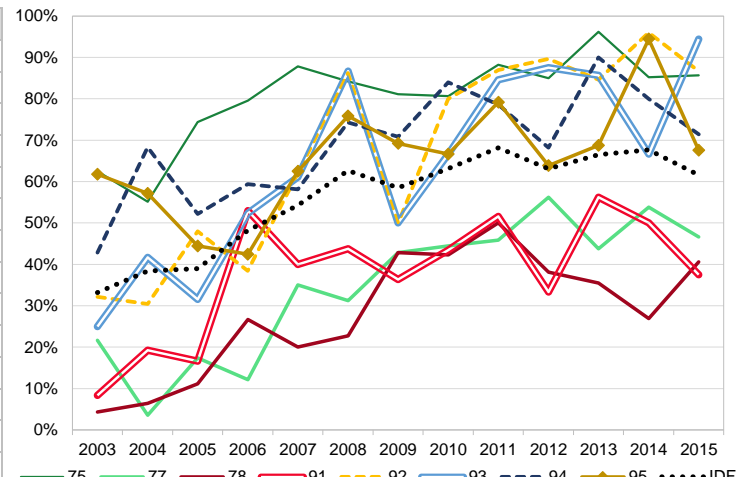
### Thrombolyse pré-hospitalière

	75	77	78	91	92	93	94	95	IDF
2003	8 (25%)	25 (68%)	17 (74%)	27 (75%)	13 (46%)	14 (70%)	8 (29%)	7 (21%)	119 (50%)
2004	14 (29%)	25 (89%)	27 (87%)	17 (65%)	13 (57%)	12 (50%)	9 (22%)	10 (36%)	127 (51%)
2005	8 (21%)	15 (65%)	26 (72%)	23 (77%)	11 (44%)	10 (53%)	15 (33%)	7 (39%)	115 (49%)
2006	5 (10%)	20 (61%)	19 (63%)	14 (41%)	6 (46%)	7 (33%)	8 (25%)	13 (39%)	92 (38%)
2007	2 (5%)	9 (45%)	25 (71%)	18 (51%)	6 (21%)	5 (28%)	11 (26%)	8 (33%)	84 (34%)
2008	0 (0%)	13 (41%)	25 (57%)	4 (25%)	3 (10%)	0 (0%)	6 (17%)	4 (14%)	55 (21%)
2009	0 (0%)	3 (14%)	11 (39%)	11 (50%)	2 (20%)	2 (25%)	4 (17%)	3 (12%)	36 (20%)
2010	1 (3%)	9 (33%)	12 (46%)	10 (43%)	0 (0%)	1 (17%)	3 (12%)	4 (19%)	40 (22%)
2011	1 (3%)	5 (21%)	15 (33%)	12 (39%)	1 (4%)	1 (8%)	3 (11%)	2 (8%)	40 (18%)
2012	1 (3%)	5 (16%)	18 (43%)	10 (42%)	1 (3%)	0 (0%)	2 (9%)	4 (11%)	41 (18%)
2013	0 (0%)	9 (28%)	11 (35%)	11 (34%)	1 (4%)	1 (7%)	1 (5%)	1 (6%)	35 (18%)
2014	1 (4%)	6 (15%)	16 (62%)	11 (46%)	0 (0%)	1 (11%)	0 (0%)	0 (0%)	35 (18%)
2015	0 (0%)	6 (40%)	17 (53%)	10 (31%)	0 (0%)	0 (0%)	0 (0%)	5 (14%)	38 (21%)
<b>total</b>	<b>41 (9%)</b>	<b>150 (41%)</b>	<b>239 (56%)</b>	<b>178 (49%)</b>	<b>57 (19%)</b>	<b>54 (28%)</b>	<b>70 (18%)</b>	<b>68 (20%)</b>	<b>857 (30%)</b>



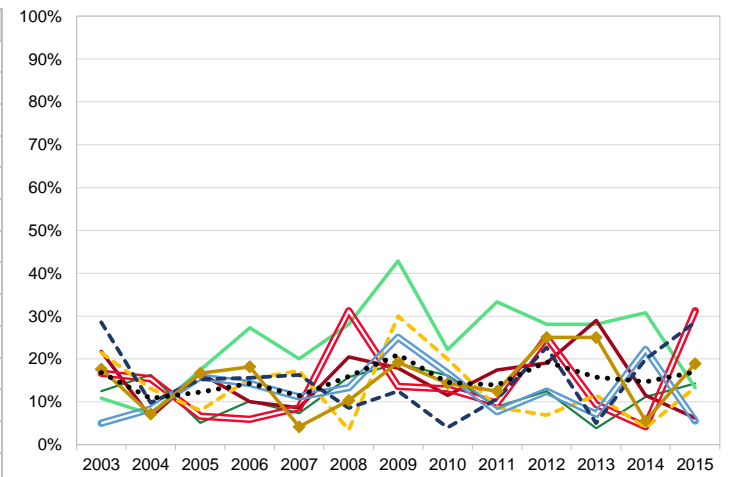
### ATL IRE <120 minutes

	75	77	78	91	92	93	94	95	IDF
2003	20 (63%)	8 (22%)	1 (4%)	3 (8%)	9 (32%)	5 (25%)	12 (43%)	21 (62%)	79 (33%)
2004	27 (55%)	1 (4%)	2 (6%)	5 (19%)	7 (30%)	10 (42%)	28 (68%)	16 (57%)	96 (38%)
2005	29 (74%)	4 (17%)	4 (11%)	5 (17%)	12 (48%)	6 (32%)	24 (52%)	8 (44%)	92 (39%)
2006	39 (80%)	4 (12%)	8 (27%)	18 (53%)	5 (38%)	11 (52%)	19 (59%)	14 (42%)	118 (48%)
2007	36 (88%)	7 (35%)	7 (20%)	14 (40%)	18 (62%)	11 (61%)	25 (58%)	15 (63%)	133 (54%)
2008	48 (84%)	10 (31%)	10 (23%)	7 (44%)	25 (86%)	13 (87%)	26 (74%)	22 (76%)	161 (63%)
2009	30 (81%)	9 (43%)	12 (43%)	8 (36%)	5 (50%)	4 (50%)	17 (71%)	18 (69%)	103 (59%)
2010	25 (81%)	12 (44%)	11 (42%)	10 (43%)	16 (80%)	4 (67%)	21 (84%)	14 (67%)	113 (63%)
2011	30 (88%)	11 (46%)	23 (50%)	16 (52%)	20 (87%)	11 (85%)	22 (79%)	19 (79%)	152 (68%)
2012	34 (85%)	18 (56%)	16 (38%)	8 (33%)	26 (90%)	7 (88%)	15 (68%)	23 (64%)	147 (63%)
2013	25 (96%)	14 (44%)	11 (35%)	18 (56%)	22 (85%)	12 (86%)	18 (90%)	11 (69%)	131 (66%)
2014	23 (85%)	21 (54%)	7 (27%)	12 (50%)	24 (96%)	6 (67%)	24 (80%)	17 (94%)	134 (68%)
2015	12 (86%)	7 (47%)	13 (41%)	12 (38%)	13 (87%)	17 (94%)	10 (71%)	25 (68%)	109 (62%)
<b>total</b>	<b>378 (79%)</b>	<b>126 (35%)</b>	<b>125 (29%)</b>	<b>136 (37%)</b>	<b>202 (68%)</b>	<b>117 (61%)</b>	<b>261 (67%)</b>	<b>223 (65%)</b>	<b>1568 (55%)</b>

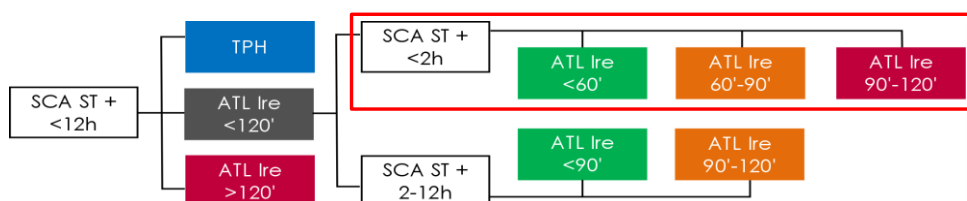


### ATL IRE >120 minutes (hors-délai)

	75	77	78	91	92	93	94	95	IDF
2003	4 (13%)	4 (11%)	5 (22%)	6 (17%)	6 (21%)	1 (5%)	8 (29%)	6 (18%)	40 (17%)
2004	8 (16%)	2 (7%)	2 (6%)	4 (15%)	3 (13%)	2 (8%)	4 (10%)	2 (7%)	27 (11%)
2005	2 (5%)	4 (17%)	6 (17%)	2 (7%)	2 (8%)	3 (16%)	7 (15%)	3 (17%)	29 (12%)
2006	5 (10%)	9 (27%)	3 (10%)	2 (6%)	2 (15%)	3 (14%)	5 (16%)	6 (18%)	35 (14%)
2007	3 (7%)	4 (20%)	3 (9%)	3 (9%)	5 (17%)	2 (11%)	7 (16%)	1 (4%)	28 (11%)
2008	9 (16%)	9 (28%)	9 (20%)	5 (31%)	1 (3%)	2 (13%)	3 (9%)	3 (10%)	41 (16%)
2009	7 (19%)	9 (43%)	5 (18%)	3 (14%)	3 (30%)	2 (25%)	3 (13%)	5 (19%)	37 (21%)
2010	5 (16%)	6 (22%)	3 (12%)	3 (13%)	4 (20%)	1 (17%)	1 (4%)	3 (14%)	26 (15%)
2011	3 (9%)	8 (33%)	8 (17%)	3 (10%)	2 (9%)	1 (8%)	3 (11%)	3 (13%)	31 (14%)
2012	5 (13%)	9 (28%)	8 (19%)	6 (25%)	2 (7%)	1 (13%)	5 (23%)	9 (25%)	45 (19%)
2013	1 (4%)	9 (28%)	9 (29%)	3 (9%)	3 (12%)	1 (7%)	1 (5%)	4 (25%)	31 (16%)
2014	3 (11%)	12 (31%)	3 (12%)	1 (4%)	1 (4%)	2 (22%)	6 (20%)	1 (6%)	29 (15%)
2015	2 (14%)	2 (13%)	2 (6%)	10 (31%)	2 (13%)	1 (6%)	4 (29%)	7 (19%)	30 (17%)
<b>total</b>	<b>57 (12%)</b>	<b>87 (24%)</b>	<b>66 (15%)</b>	<b>51 (14%)</b>	<b>36 (12%)</b>	<b>22 (11%)</b>	<b>57 (15%)</b>	<b>53 (15%)</b>	<b>429 (15%)</b>



## SCA ST+<2h avec facteur de gravité



### ATL Ire <60 minutes (délai cible)

	75	77	78	91	92	93	94	95	IDF
2003	0 (0%)	0 (0%)	0 (0%)	0 (0%)	0 (0%)	0 (0%)	0 (0%)	0 (0%)	0 (0%)
2004	0 (0%)	0 (0%)	0 (0%)	0 (0%)	0 (0%)	0 (0%)	3 (13%)	0 (0%)	3 (4%)
2005	0 (0%)	0 (0%)	0 (0%)	0 (0%)	1 (25%)	0 (0%)	0 (0%)	0 (0%)	1 (2%)
2006	1 (3%)	2 (67%)	0 (0%)	0 (0%)	0 (0%)	1 (13%)	1 (8%)	1 (11%)	6 (7%)
2007	2 (7%)	0 (0%)	0 (0%)	0 (0%)	1 (7%)	0 (0%)	1 (6%)	0 (0%)	4 (4%)
2008	1 (3%)	1 (17%)	1 (13%)	0 (0%)	1 (7%)	1 (9%)	2 (13%)	0 (0%)	7 (6%)
2009	0 (0%)	0 (0%)	0 (0%)	0 (0%)	0 (0%)	0 (0%)	0 (0%)	0 (0%)	0 (0%)
2010	0 (0%)	0 (0%)	0 (0%)	0 (0%)	1 (10%)	0 (0%)	0 (0%)	1 (8%)	2 (3%)
2011	1 (4%)	1 (11%)	0 (0%)	0 (0%)	1 (9%)	0 (0%)	1 (6%)	1 (8%)	5 (5%)
2012	0 (0%)	1 (7%)	0 (0%)	0 (0%)	0 (0%)	0 (0%)	0 (0%)	1 (6%)	2 (2%)
2013	1 (6%)	0 (0%)	0 (0%)	1 (7%)	1 (7%)	0 (0%)	3 (21%)	0 (0%)	6 (6%)
2014	4 (27%)	0 (0%)	0 (0%)	0 (0%)	0 (0%)	0 (0%)	1 (6%)	0 (0%)	5 (6%)
2015	1 (17%)	0 (0%)	0 (0%)	0 (0%)	0 (0%)	2 (13%)	0 (0%)	1 (6%)	4 (5%)
<b>total</b>	<b>11 (4%)</b>	<b>5 (6%)</b>	<b>1 (1%)</b>	<b>1 (1%)</b>	<b>6 (5%)</b>	<b>4 (5%)</b>	<b>12 (7%)</b>	<b>5 (3%)</b>	<b>45 (4%)</b>

Les effectifs sont trop faibles pour obtenir une analyse graphique interprétable

### ATL Ire 60-90 minutes (délai acceptable)

	75	77	78	91	92	93	94	95	IDF
2003	6 (50%)	0 (0%)	0 (0%)	1 (50%)	1 (14%)	1 (33%)	5 (50%)	7 (50%)	21 (41%)
2004	8 (42%)	0 (0%)	2 (100%)	2 (40%)	1 (20%)	3 (50%)	10 (43%)	5 (38%)	31 (42%)
2005	6 (32%)	0 (0%)	1 (25%)	0 (0%)	1 (25%)	1 (25%)	5 (33%)	2 (67%)	16 (30%)
2006	11 (38%)	1 (33%)	3 (43%)	7 (44%)	1 (25%)	2 (25%)	6 (50%)	5 (56%)	36 (41%)
2007	17 (57%)	1 (33%)	2 (67%)	2 (22%)	5 (36%)	3 (43%)	11 (69%)	5 (42%)	46 (49%)
2008	20 (53%)	3 (50%)	0 (0%)	1 (17%)	8 (53%)	6 (55%)	9 (60%)	9 (69%)	56 (50%)
2009	10 (43%)	1 (11%)	1 (13%)	1 (25%)	1 (33%)	1 (100%)	10 (71%)	3 (30%)	28 (39%)
2010	9 (64%)	6 (75%)	1 (11%)	3 (50%)	4 (40%)	1 (50%)	6 (50%)	3 (23%)	33 (45%)
2011	9 (39%)	3 (33%)	8 (47%)	6 (60%)	3 (27%)	6 (75%)	10 (56%)	10 (83%)	55 (51%)
2012	11 (55%)	3 (21%)	6 (46%)	2 (40%)	9 (45%)	4 (80%)	5 (50%)	5 (29%)	45 (43%)
2013	10 (56%)	1 (9%)	5 (63%)	6 (43%)	2 (14%)	4 (50%)	7 (50%)	4 (50%)	39 (41%)
2014	8 (53%)	4 (25%)	1 (20%)	1 (20%)	9 (69%)	5 (100%)	9 (56%)	6 (55%)	43 (50%)
2015	3 (75%)	4 (67%)	0 (0%)	7 (70%)	1 (14%)	2 (33%)	3 (75%)	5 (31%)	25 (45%)
<b>total</b>	<b>128 (48%)</b>	<b>27 (30%)</b>	<b>30 (35%)</b>	<b>39 (41%)</b>	<b>46 (36%)</b>	<b>39 (53%)</b>	<b>96 (54%)</b>	<b>69 (46%)</b>	<b>474 (44%)</b>

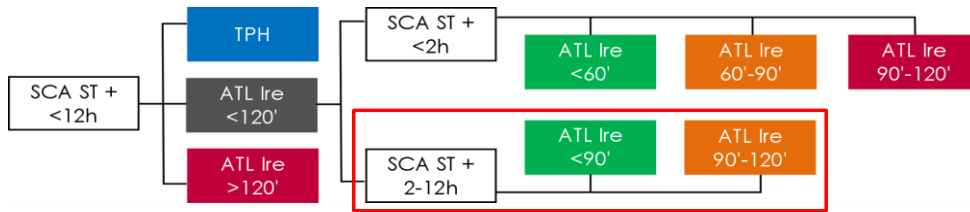
Les effectifs sont trop faibles pour obtenir une analyse graphique interprétable

### ATL Ire >90 minutes (hors-délai)

	75	77	78	91	92	93	94	95	IDF
2003	6 (50%)	3 (100%)	0 (0%)	1 (50%)	6 (86%)	2 (67%)	5 (50%)	7 (50%)	30 (59%)
2004	11 (58%)	0 (0%)	0 (0%)	3 (60%)	4 (80%)	3 (50%)	10 (43%)	8 (62%)	39 (53%)
2005	13 (68%)	2 (100%)	3 (75%)	3 (100%)	2 (50%)	3 (75%)	10 (67%)	1 (33%)	37 (69%)
2006	17 (59%)	0 (0%)	4 (57%)	9 (56%)	3 (75%)	5 (63%)	5 (42%)	3 (33%)	46 (52%)
2007	11 (37%)	2 (67%)	1 (33%)	7 (78%)	8 (57%)	4 (57%)	4 (25%)	7 (58%)	44 (47%)
2008	17 (45%)	2 (33%)	7 (88%)	5 (83%)	6 (40%)	4 (36%)	4 (27%)	4 (31%)	49 (44%)
2009	13 (57%)	8 (89%)	7 (88%)	3 (75%)	2 (67%)	0 (0%)	4 (29%)	7 (70%)	44 (61%)
2010	5 (36%)	2 (25%)	8 (89%)	3 (50%)	5 (50%)	1 (50%)	6 (50%)	9 (69%)	39 (53%)
2011	13 (57%)	5 (56%)	9 (53%)	4 (40%)	7 (64%)	2 (25%)	7 (39%)	1 (8%)	48 (44%)
2012	9 (45%)	10 (71%)	7 (54%)	3 (60%)	11 (55%)	1 (20%)	5 (50%)	11 (65%)	57 (55%)
2013	7 (39%)	10 (91%)	3 (38%)	7 (50%)	11 (79%)	4 (50%)	4 (29%)	4 (50%)	50 (53%)
2014	3 (20%)	12 (75%)	4 (80%)	4 (80%)	4 (31%)	0 (0%)	6 (38%)	5 (45%)	38 (44%)
2015	2 (33%)	2 (33%)	5 (71%)	3 (30%)	7 (78%)	5 (33%)	3 (50%)	10 (59%)	37 (49%)
<b>total</b>	<b>127 (48%)</b>	<b>58 (64%)</b>	<b>58 (64%)</b>	<b>55 (58%)</b>	<b>76 (59%)</b>	<b>34 (41%)</b>	<b>73 (40%)</b>	<b>77 (51%)</b>	<b>558 (51%)</b>

Les effectifs sont trop faibles pour obtenir une analyse graphique interprétable

## SCA ST+ 2-12h avec facteur de gravité



### ATL Ire <90 minutes (délai cible)

	75	77	78	91	92	93	94	95	IDF
2003	6 (75%)	4 (80%)	0 (0%)	0 (0%)	1 (50%)	1 (50%)	0 (0%)	3 (43%)	15 (54%)
2004	3 (38%)	1 (100%)	0 (0%)	0 (0%)	0 (0%)	2 (50%)	4 (80%)	1 (33%)	11 (48%)
2005	4 (40%)	0 (0%)	0 (0%)	0 (0%)	2 (25%)	1 (50%)	3 (33%)	2 (40%)	12 (32%)
2006	6 (60%)	0 (0%)	0 (0%)	0 (0%)	1 (100%)	2 (67%)	4 (57%)	3 (60%)	16 (53%)
2007	4 (67%)	1 (25%)	1 (25%)	1 (20%)	4 (100%)	2 (50%)	4 (44%)	1 (33%)	18 (46%)
2008	7 (70%)	0 (0%)	0 (0%)	0 (0%)	2 (20%)	1 (50%)	7 (64%)	4 (44%)	21 (43%)
2009	3 (43%)	0 (0%)	1 (25%)	1 (25%)	0 (0%)	3 (100%)	0 (0%)	4 (50%)	12 (39%)
2010	9 (82%)	1 (25%)	1 (50%)	2 (50%)	5 (83%)	2 (100%)	2 (22%)	1 (100%)	23 (59%)
2011	6 (86%)	1 (50%)	2 (33%)	0 (0%)	3 (33%)	2 (67%)	2 (50%)	3 (43%)	19 (43%)
2012	7 (50%)	3 (75%)	0 (0%)	1 (33%)	1 (17%)	2 (100%)	3 (60%)	1 (17%)	18 (42%)
2013	4 (57%)	0 (0%)	0 (0%)	1 (25%)	3 (38%)	1 (25%)	2 (50%)	2 (67%)	13 (36%)
2014	5 (63%)	2 (40%)	1 (50%)	4 (57%)	7 (64%)	1 (100%)	6 (75%)	1 (17%)	27 (56%)
2015	4 (67%)	1 (100%)	4 (67%)	0 (0%)	1 (25%)	2 (100%)	2 (50%)	4 (50%)	18 (55%)
<b>total</b>	<b>68 (61%)</b>	<b>14 (39%)</b>	<b>10 (29%)</b>	<b>10 (24%)</b>	<b>30 (41%)</b>	<b>22 (65%)</b>	<b>39 (49%)</b>	<b>30 (42%)</b>	<b>223 (46%)</b>

Les effectifs sont trop faibles pour obtenir une analyse graphique interprétable

### ATL Ire 90-120 minutes (délai acceptable)

	75	77	78	91	92	93	94	95	IDF
2003	2 (25%)	1 (20%)	1 (100%)	1 (100%)	1 (50%)	1 (50%)	2 (100%)	4 (57%)	13 (46%)
2004	5 (63%)	0 (0%)	0 (0%)	0 (0%)	2 (100%)	2 (50%)	1 (20%)	2 (67%)	12 (52%)
2005	6 (60%)	2 (100%)	0 (0%)	2 (100%)	6 (75%)	1 (50%)	6 (67%)	3 (60%)	26 (68%)
2006	4 (40%)	1 (100%)	1 (100%)	2 (100%)	0 (0%)	1 (33%)	3 (43%)	2 (40%)	14 (47%)
2007	2 (33%)	3 (75%)	3 (75%)	4 (80%)	0 (0%)	2 (50%)	5 (56%)	2 (67%)	21 (54%)
2008	3 (30%)	4 (100%)	2 (100%)	1 (100%)	8 (80%)	1 (50%)	4 (36%)	5 (56%)	28 (57%)
2009	4 (57%)	0 (0%)	3 (75%)	3 (75%)	2 (100%)	0 (0%)	3 (100%)	4 (50%)	19 (61%)
2010	2 (18%)	3 (75%)	1 (50%)	2 (50%)	1 (17%)	0 (0%)	7 (78%)	0 (0%)	16 (41%)
2011	1 (14%)	1 (50%)	4 (67%)	6 (100%)	6 (67%)	1 (33%)	2 (50%)	4 (57%)	25 (57%)
2012	7 (50%)	1 (25%)	3 (100%)	2 (67%)	5 (83%)	0 (0%)	2 (40%)	5 (83%)	25 (58%)
2013	3 (43%)	3 (100%)	3 (100%)	3 (75%)	5 (63%)	3 (75%)	2 (50%)	1 (33%)	23 (64%)
2014	3 (38%)	3 (60%)	1 (50%)	3 (43%)	4 (36%)	0 (0%)	2 (25%)	5 (83%)	21 (44%)
2015	2 (33%)	0 (0%)	2 (33%)	2 (100%)	3 (75%)	0 (0%)	2 (50%)	4 (50%)	15 (45%)
<b>total</b>	<b>44 (39%)</b>	<b>22 (61%)</b>	<b>24 (71%)</b>	<b>31 (76%)</b>	<b>43 (59%)</b>	<b>12 (35%)</b>	<b>41 (51%)</b>	<b>41 (58%)</b>	<b>258 (54%)</b>

Les effectifs sont trop faibles pour obtenir une analyse graphique interprétable

## SCA ST+<12h sans facteur de gravité pris en charge en primaire de 2003 à 2015

ATL Ire <12H									
75	77	78	91	92	93	94	95	IDF	
2029	2133	1266	1256	1148	1526	1531	1466	<b>12355</b>	

TPH									
75	77	78	91	92	93	94	95	IDF	
91	595	639	456	174	273	153	240	<b>2621</b>	
4%	28%	50%	36%	15%	18%	10%	16%	<b>21%</b>	

ATL Ire <120'									
75	77	78	91	92	93	94	95	IDF	
1833	1162	432	663	881	1109	1274	1083	<b>8437</b>	
90%	54%	34%	53%	77%	73%	83%	74%	<b>68%</b>	

ATL Ire >120'									
75	77	78	91	92	93	94	95	IDF	
105	376	195	137	93	144	104	143	<b>1297</b>	
5%	18%	15%	11%	8%	9%	7%	10%	<b>10%</b>	

SCA ST+ <2H									
75	77	78	91	92	93	94	95	IDF	
1187	747	255	366	576	689	795	761	<b>5376</b>	
65%	64%	59%	55%	65%	62%	62%	70%	<b>64%</b>	

SCA ST+ 2-12H									
75	77	78	91	92	93	94	95	IDF	
646	415	177	297	305	420	479	322	<b>3061</b>	
35%	36%	41%	45%	35%	38%	38%	30%	<b>36%</b>	

ATL Ire <60'									
75	77	78	91	92	93	94	95	IDF	
137	27	3	20	36	61	47	49	<b>380</b>	
12%	4%	1%	5%	6%	9%	6%	6%	<b>7%</b>	

ATL Ire 60-90'									
75	77	78	91	92	93	94	95	IDF	
714	334	99	161	323	398	481	387	<b>2897</b>	
60%	45%	39%	44%	56%	58%	61%	51%	<b>54%</b>	

ATL Ire 90-120'									
75	77	78	91	92	93	94	95	IDF	
336	386	153	185	217	230	267	325	<b>2099</b>	
28%	52%	60%	51%	38%	33%	34%	43%	<b>39%</b>	

ATL Ire <90'									
75	77	78	91	92	93	94	95	IDF	
446	147	58	147	182	283	271	178	<b>1712</b>	
69%	35%	33%	49%	60%	67%	57%	55%	<b>56%</b>	

ATL Ire 90'-120'									
75	77	78	91	92	93	94	95	IDF	
200	268	119	150	123	137	208	144	<b>1349</b>	
31%	65%	67%	51%	40%	33%	43%	45%	<b>44%</b>	

## SCA ST+<12h sans facteur de gravité pris en charge en primaire en 2015

ATL Ire <12H									
75	77	78	91	92	93	94	95	IDF	
144	111	86	88	128	122	109	125	<b>913</b>	

TPH									
75	77	78	91	92	93	94	95	IDF	
0	9	30	14	1	0	2	1	<b>57</b>	
0%	8%	35%	16%	1%	0%	2%	1%	<b>6%</b>	

ATL Ire <120'									
75	77	78	91	92	93	94	95	IDF	
137	88	44	67	123	112	94	118	<b>783</b>	
95%	79%	51%	76%	96%	92%	86%	94%	<b>86%</b>	

ATL Ire >120'									
75	77	78	91	92	93	94	95	IDF	
7	14	12	7	4	10	13	6	<b>73</b>	
5%	13%	14%	8%	3%	8%	12%	5%	<b>8%</b>	

SCA ST+ <2H									
75	77	78	91	92	93	94	95	IDF	
95	65	25	42	87	74	57	87	<b>532</b>	
69%	74%	57%	63%	71%	66%	61%	74%	<b>68%</b>	

SCA ST+ 2-12H									
75	77	78	91	92	93	94	95	IDF	
42	23	19	25	36	38	37	31	<b>251</b>	
31%	26%	43%	37%	29%	34%	39%	26%	<b>32%</b>	

ATL Ire <60'									
75	77	78	91	92	93	94	95	IDF	
18	3	0	2	9	7	2	5	<b>46</b>	
19%	5%	0%	5%	10%	9%	4%	6%	<b>9%</b>	

ATL Ire 60-90'									
75	77	78	91	92	93	94	95	IDF	
58	28	7	26	53	51	31	39	<b>293</b>	
61%	43%	28%	62%	61%	69%	54%	45%	<b>55%</b>	

ATL Ire 90-120'									
75	77	78	91	92	93	94	95	IDF	
19	34	18	14	25	16	24	43	<b>193</b>	
20%	52%	72%	33%	29%	22%	42%	49%	<b>36%</b>	

ATL Ire <90'									
75	77	78	91	92	93	94	95	IDF	
31	11	8	14	28	28	21	15	<b>156</b>	
74%	48%	42%	56%	78%	74%	57%	48%	<b>62%</b>	

ATL Ire 90'-120'									
75	77	78	91	92	93	94	95	IDF	
11	12	11	11	8	10	16	16	<b>95</b>	
26%	52%	58%	44%	22%	26%	43%	52%	<b>38%</b>	